



WALTER A. TILLIT, JR., P.E.

tilteco@aol.com
FL P.E. License No. 44167
FL E.B. License No. 0006719

PRODUCT EVALUATION REPORT

REPORT NO.: 17-0811.04
DATE: August 11, 2017
PRODUCT CATEGORY: Hurricane Shutters
PRODUCT SUB-CATEGORY: Colonial Shutters
PRODUCT NAME: Aluminum Colonial Shutter
SUBMITTED BY: Eastern Metal Supply, Inc
4268 Westroads Drive
West Palm Beach, FL 33407

1. PURPOSE OF EVALUATION:

This is a Product Evaluation Report issued by **Walter A. Tillit, Jr., P.E.** (System ID # 1906) to **Eastern Metal Supply, Inc.**, based on Rule Chapter No. 61G20-3, Method 1D of the Florida Department of Business and Professional Regulation.

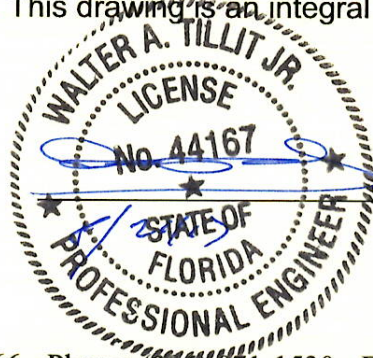
This product is being issued an Evaluation Report as described herein, and has been verified for compliance in accordance with the 2017 sixth edition of the Florida Building Code, and to verify that the product is for the purpose intended at least equivalent to that required by the Code.

This Product Evaluation Report shall be subject to review and revision in case of a Building Code Change that may affect its limitations and conditions.

2. EVIDENCE SUBMITTED:

2.1. PRODUCT EVALUATION DOCUMENT (P.E.D.):

Drawing No. 17-093 (revises Drawing # 15-168), titled "ALUMINUM COLONIAL SHUTTER", sheet 1 thru 14 of 14, prepared by Tilteco, Inc.; signed and sealed by Walter A. Tillit, Jr., P.E.; dated 08/11/17. This drawing is an integral part of this Evaluation Report.



PRODUCT EVALUATION REPORT NO. 17-0811.04**2.2. TEST REPORTS:**

Large missile impact loading under ASTM E-1886-05 and ASTM E 1996-05 Standards, as per section 1609.1.2 of the Florida Building Code. Uniform Static loads in accordance with ASTM E-330 Standard.

Test reports prepared by American Testing Lab of South Florida, Report No. 1120.01-07, dated 02/16/2011 signed and sealed by Henry Hattem P.E.

2.3. STRUCTURAL ENGINEERING CALCULATIONS:

On Aluminum Colonial Shutter for anchor at hinges vs. design wind load and shutter span based on rational and comparative analysis, and in accordance with section 1612 of the Florida Building Code. Calculations prepared by Tilteco, Inc., dated 02/28/08, signed and sealed by Walter A. Tillit, Jr., P.E., and on August 11, 2017.

3. MISSILE IMPACT RESISTANCE:

Large missile impact under section 1609.1.2 of the Florida Building Code, as per ASTM E 1886-05 and ASTM E 1996-05 Standards, qualifying missile type D.

4. WIND LOADS RESISTANCE:

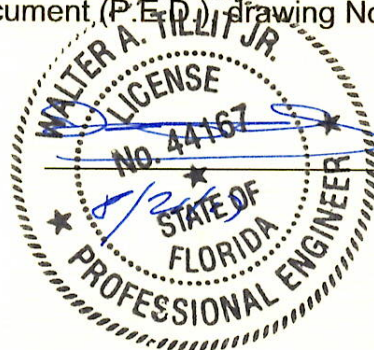
Aluminum Colonial Shutter has been verified to sustain wind pressures. Maximum Shutter Span shall be as indicated on sheets 3, and 9 of 14, of Product Evaluation Document (P.E.D.), drawing No. 17-093. Anchor Details shall be as indicated on sheets 4, 5, 6, 7, 10, 11, 12 and 13 of 14, of Product Evaluation Document (P.E.D.), drawing No. 17-093. Aluminum Colonial Shutter has been verified for code compliance to work as a non porous wind load resistant storm shutter assembly, as per section 3.2.8 of ASTM E 1996-05 Standard.

5. INSTALLATION:

Shall be performed strictly in accordance with the details indicated on sheets 3 thru 14 of 14, of Product Evaluation Document (P.E.D.), drawing No. 17-093. Minimum separation to glass shall be as indicated on sheets 3, 4, 6, 7, 10, 12 and 13 of 14, of Product Evaluation Document (P.E.D.), drawing No. 17-093.

6. MATERIAL CHARACTERISTICS AND SPECIFICATIONS:

Shall be strictly in accordance with General Notes and Components indicated on sheets 1 and 2 of 14 of Product Evaluation Document (P.E.D.), drawing No. 17-093. Anchor specifications shall be as indicated on sheets 1, 4, 5, 6, 7, 10, 11, 12 and 13 of 14, of Product Evaluation Document (P.E.D.), drawing No. 17-093.



PRODUCT EVALUATION REPORT NO. 17-0811.04

7. LIMITATIONS AND CONDITIONS OF USE:

7.1. Shall be strictly in compliance with General Notes No. 1, 2 and 8 thru 13, indicated on sheet 1 of 14, of Product Evaluation Document (P.E.D.), drawing No. 17-093 prepared by Tilteco, Inc. and signed and sealed by Walter A. Tillit, Jr., P.E.

7.2. Product **shall not** be installed within HIGH VELOCITY HURRICANE ZONES as defined on section 1620.2 of the Florida Building Code.

7.3. Product shall only be installed into wood frame, poured concrete or concrete block structures.

7.4. Product shall only be installed within Wind Zones 1, 2 and 3 (basic wind speed equal or less than 140 mph) as per ASTM E 1996-05 Standard.

7.5. Product shall not be installed at essential facilities as defined by Sections 6.2.1.1, 6.2.1.2 and 8.3 of ASTM E 1996-05 Standard.

Product Evaluation Report prepared by Walter A. Tillit, Jr., P.E. (Florida License No. 44167), President of Tilteco, Inc. (Florida EB-0006719).

